

## Wireless @ Johns Hopkins

### 'eduroam' Configuration Guide:

#### Windows XP

Johns Hopkins has joined the eduroam (education roaming) federation. Membership allows campus community members at any participating institution to use wireless network services at any other participating institution with the simplicity and convenience of providing the login credentials issued to them by their home institution.

This means that Johns Hopkins students, faculty, and staff may visit member institutions domestically and abroad and use their JHED credentials to log into wireless. Additionally, anyone with a valid JHED\_ID may access the wireless network here at Johns Hopkins. At JHU, the level of service provided by eduroam will be the same as the level of service provided by the hopkins wireless network.

You will need to use your credentials in this format:

Login: JHED\_ID@jhu.edu  
Password: JHED password

To connect to eduroam at a **visiting institution** you will need the following information:

SSID (Network Name): eduroam  
TCP/IP: DHCP  
EAP Type: PEAP  
Network Authentication: <**visited institution authentication type**>  
Data Encryption: <**visited institution encryption type**>  
Authentication Method/Protocol: MSCHAP-v2  
Trusted Root Certification Authorities: Comodo/AddTrust External Root CA  
Server name: freeradiuspilot.win.ad.jhu.edu

To connect to eduroam at **Johns Hopkins** you will need the following information:

SSID (Network Name): eduroam  
TCP/IP: DHCP  
EAP Type: PEAP  
Network Authentication: WPA2  
Data Encryption: AES  
Authentication Method/Protocol: MSCHAP-v2  
Trusted Root Certification Authorities: Comodo/AddTrust External Root CA  
Server name: freeradiuspilot.win.ad.jhu.edu

Please see below for illustrated instructions.

# Wireless @ Johns Hopkins

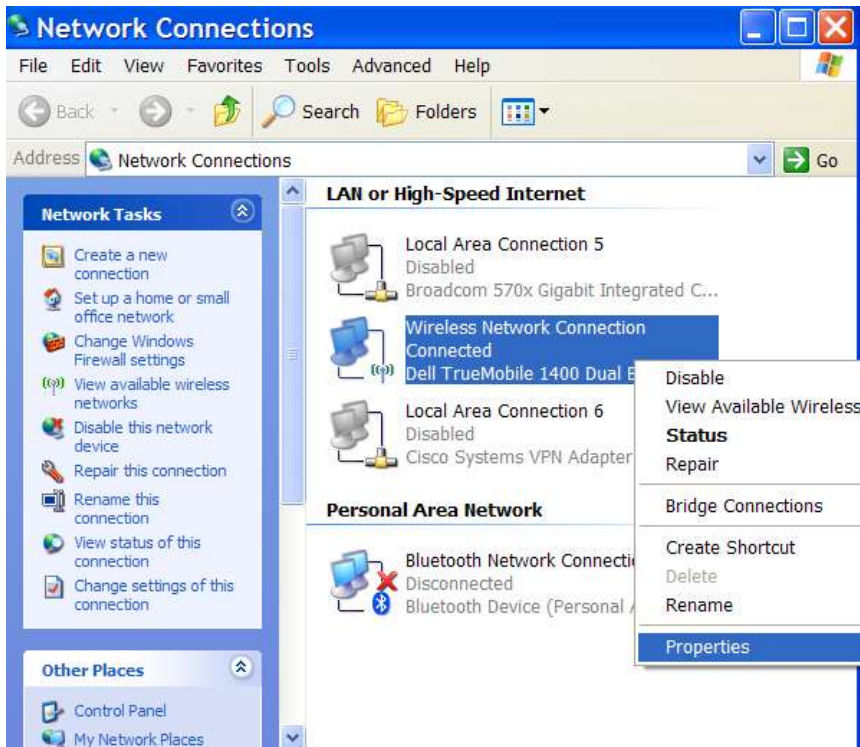
## Connecting to “eduroam” at JHU:

**Step 1:** From the **Start Menu**, click on **Connect To** and select **Show all connections**.



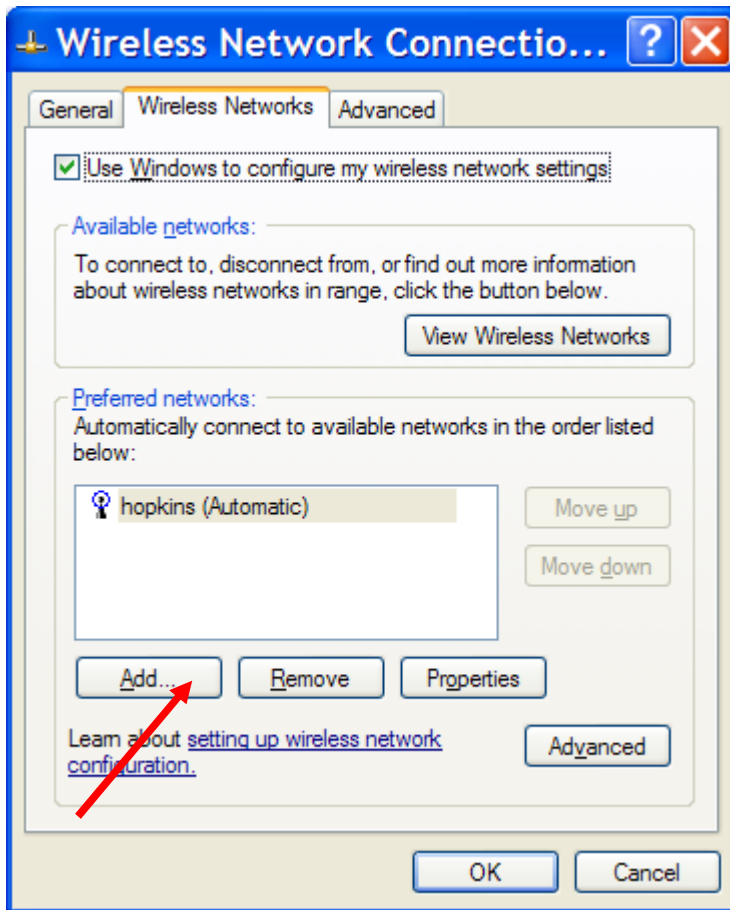
**Step 2:** **Highlight** the Wireless Network Connection, and right click. Select **Properties** at the bottom of the menu.

**NOTE:** Your wireless card must be enabled to make changes.



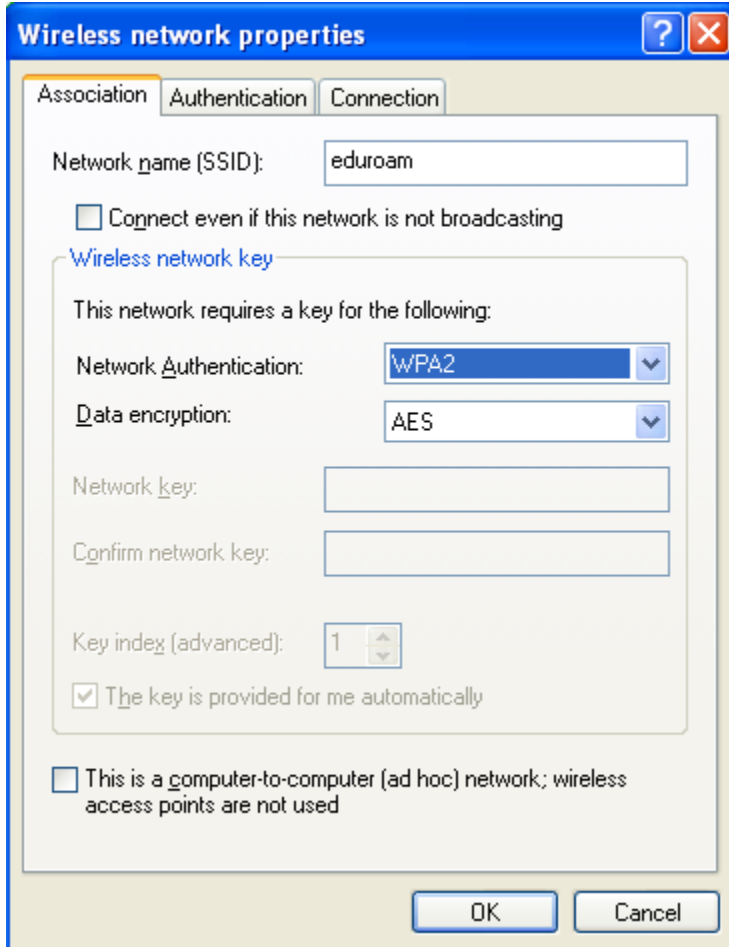
## Wireless @ Johns Hopkins

**Step 3:** You should now see the wireless network properties. Select the **Wireless Networks** tab. Then click **Add**.



## Wireless @ Johns Hopkins

**Step 4:** Configure as shown below. Then click the **Authentication** tab.



The screenshot shows the 'Wireless network properties' dialog box with the 'Authentication' tab selected. The 'Network name (SSID)' is set to 'eduroam'. The 'Connect even if this network is not broadcasting' checkbox is unchecked. The 'Wireless network key' section is expanded, showing 'This network requires a key for the following:'. The 'Network authentication' dropdown is set to 'WPA2' and the 'Data encryption' dropdown is set to 'AES'. The 'Network key' and 'Confirm network key' fields are empty. The 'Key index (advanced)' is set to '1'. The 'The key is provided for me automatically' checkbox is checked. The 'This is a computer-to-computer (ad hoc) network; wireless access points are not used' checkbox is unchecked. The 'OK' and 'Cancel' buttons are at the bottom.

Wireless network properties

Association Authentication Connection

Network name (SSID): eduroam

Connect even if this network is not broadcasting

Wireless network key

This network requires a key for the following:

Network authentication: WPA2

Data encryption: AES

Network key:

Confirm network key:

Key index (advanced): 1

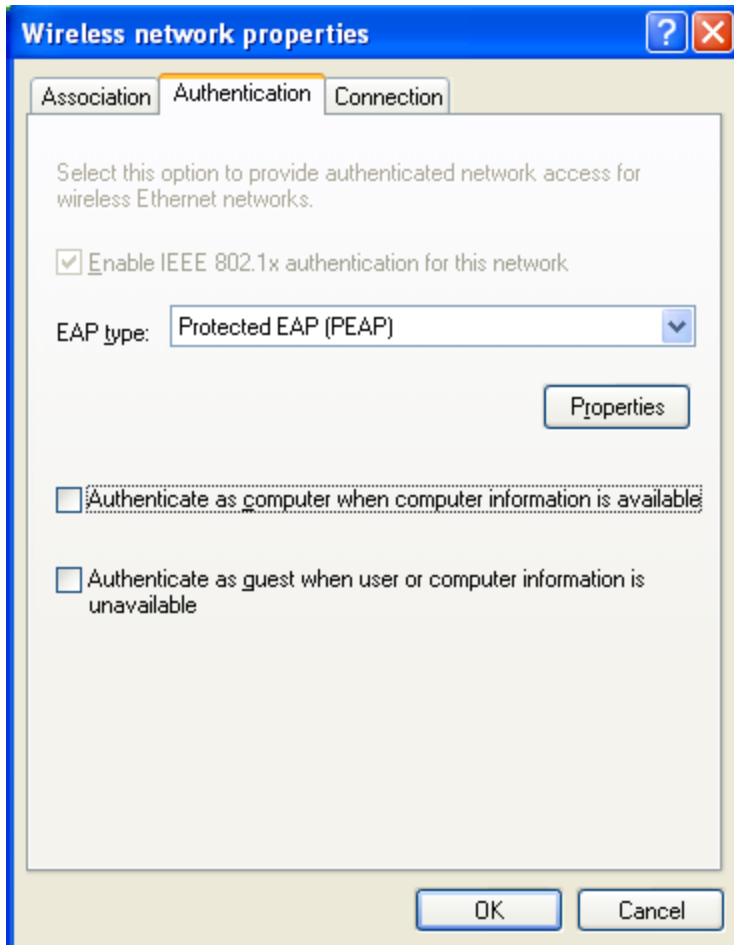
The key is provided for me automatically

This is a computer-to-computer (ad hoc) network; wireless access points are not used

OK Cancel

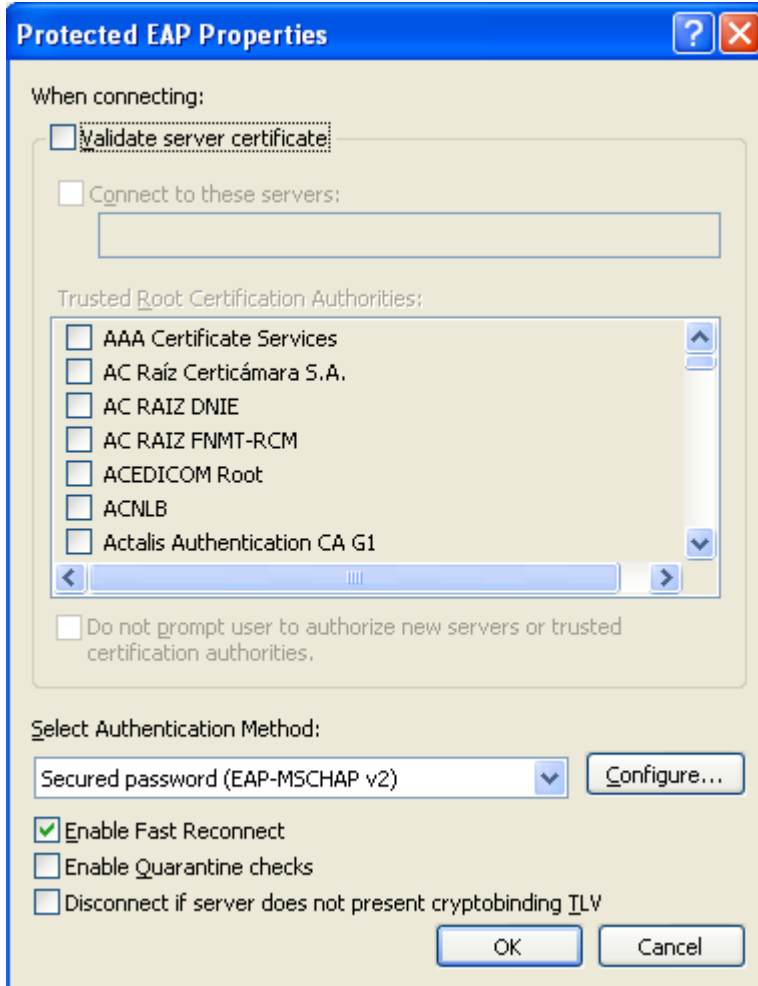
## Wireless @ Johns Hopkins

**Step 5:** Configure as seen below. Then click **Properties**.

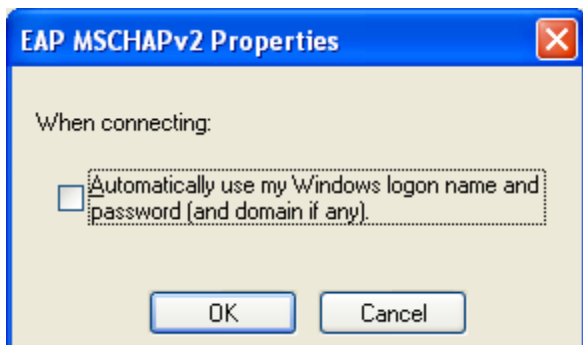


## Wireless @ Johns Hopkins

**Step 6:** Configure as seen below. Then click **Configure**.

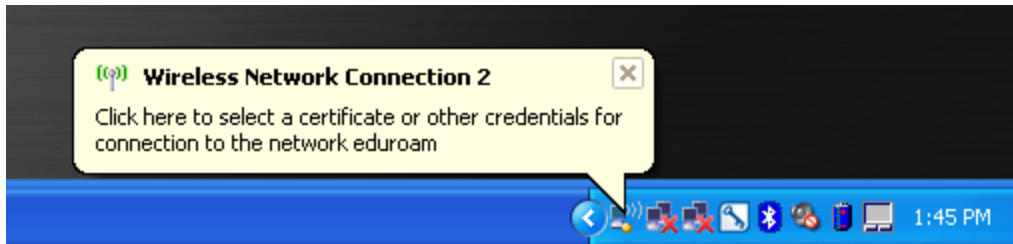


**Step 7:** Uncheck the box below and click **OK** until you are back to the desktop.

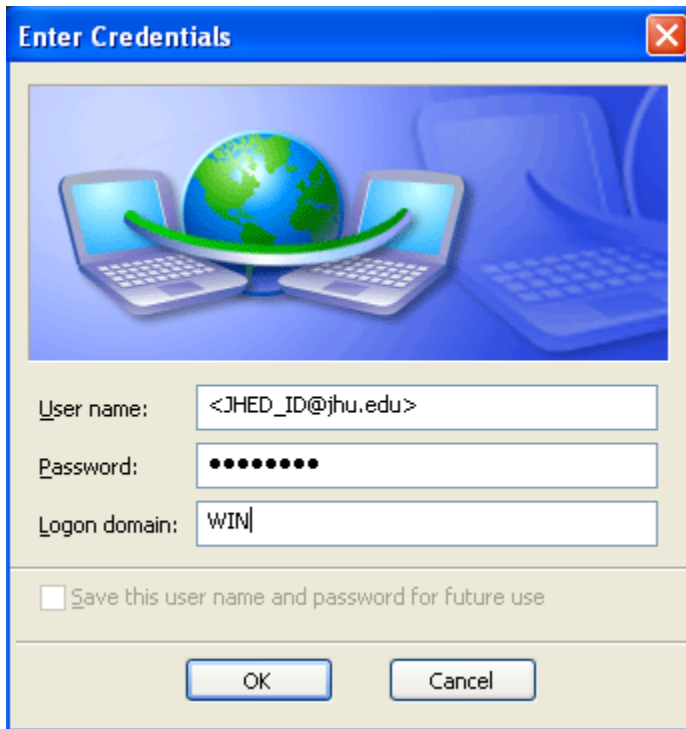


## Wireless @ Johns Hopkins

**Step 8:** Click the balloon that pops-up at the bottom of the screen.



**Step 9:** Enter your credentials, using your **JHED\_ID @jhu.edu**, as the username, JHED\_ID as password, and WIN Domain.



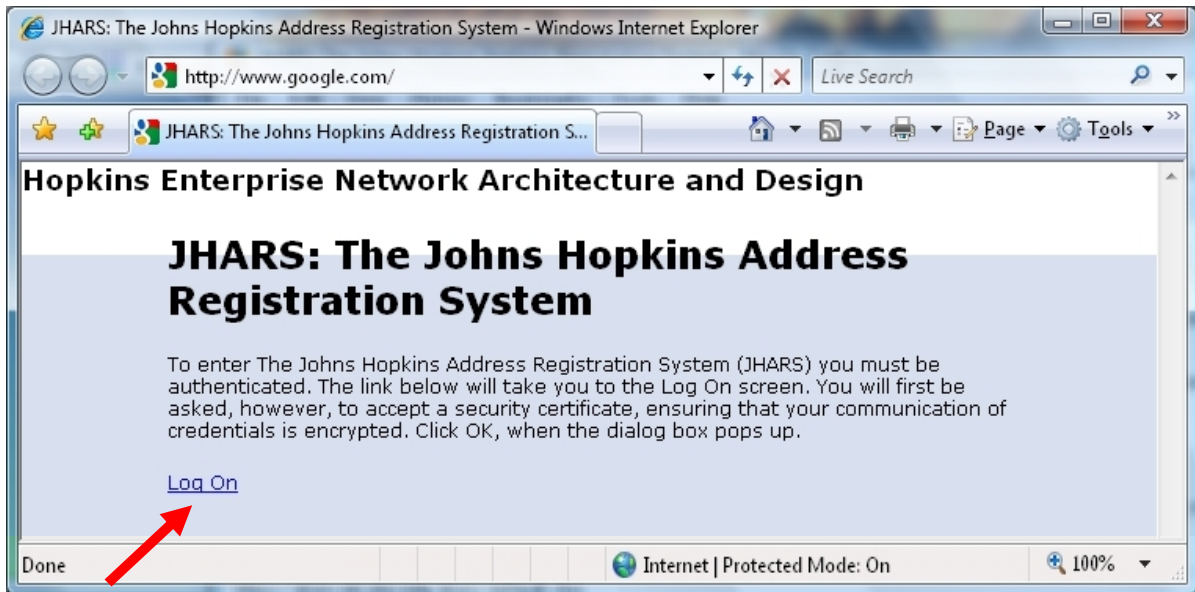
You are now on the network!

Please see additional instruction below, if this is your first time connecting to a wireless network at Johns Hopkins.

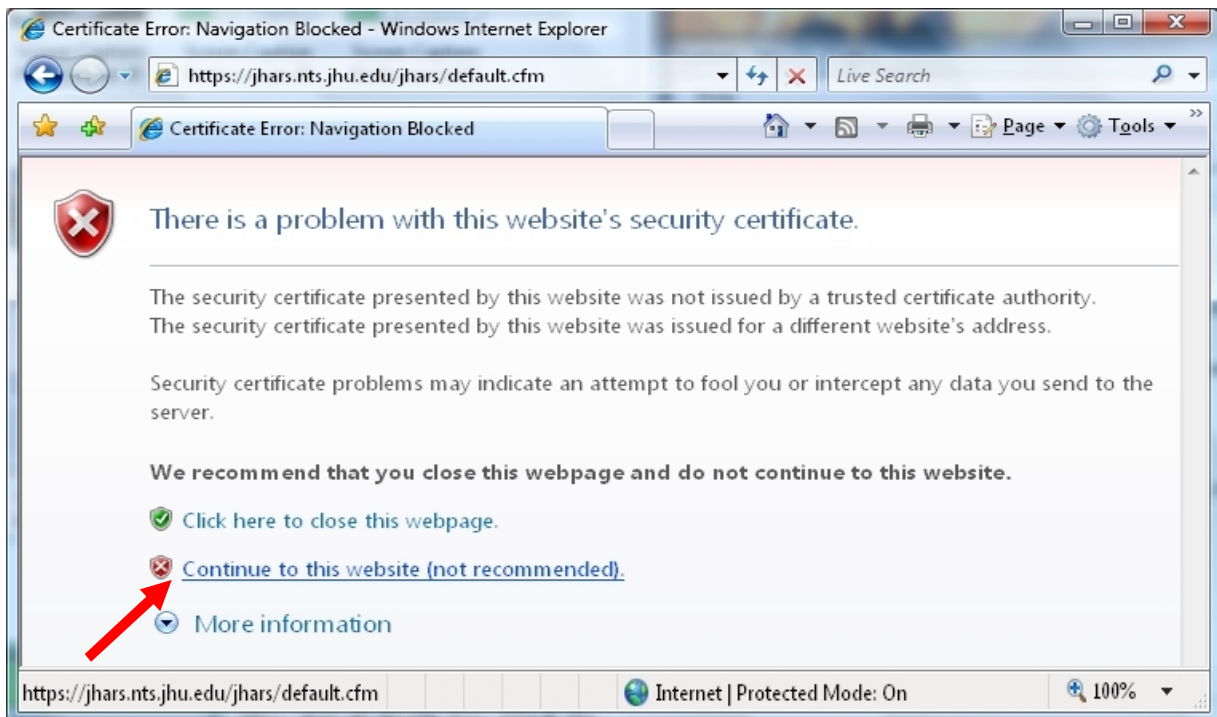
## Wireless @ Johns Hopkins

### **JHARS Registration Required for First-Time Users:**

**Step 10:** Open a new web browser window. If this is your FIRST time connecting this device to a wireless network at Johns Hopkins, you will be directed to our JHARS registration website. If you are not redirected, please type <http://jhars.nts.jhu.edu>. Click **Log On** to continue.



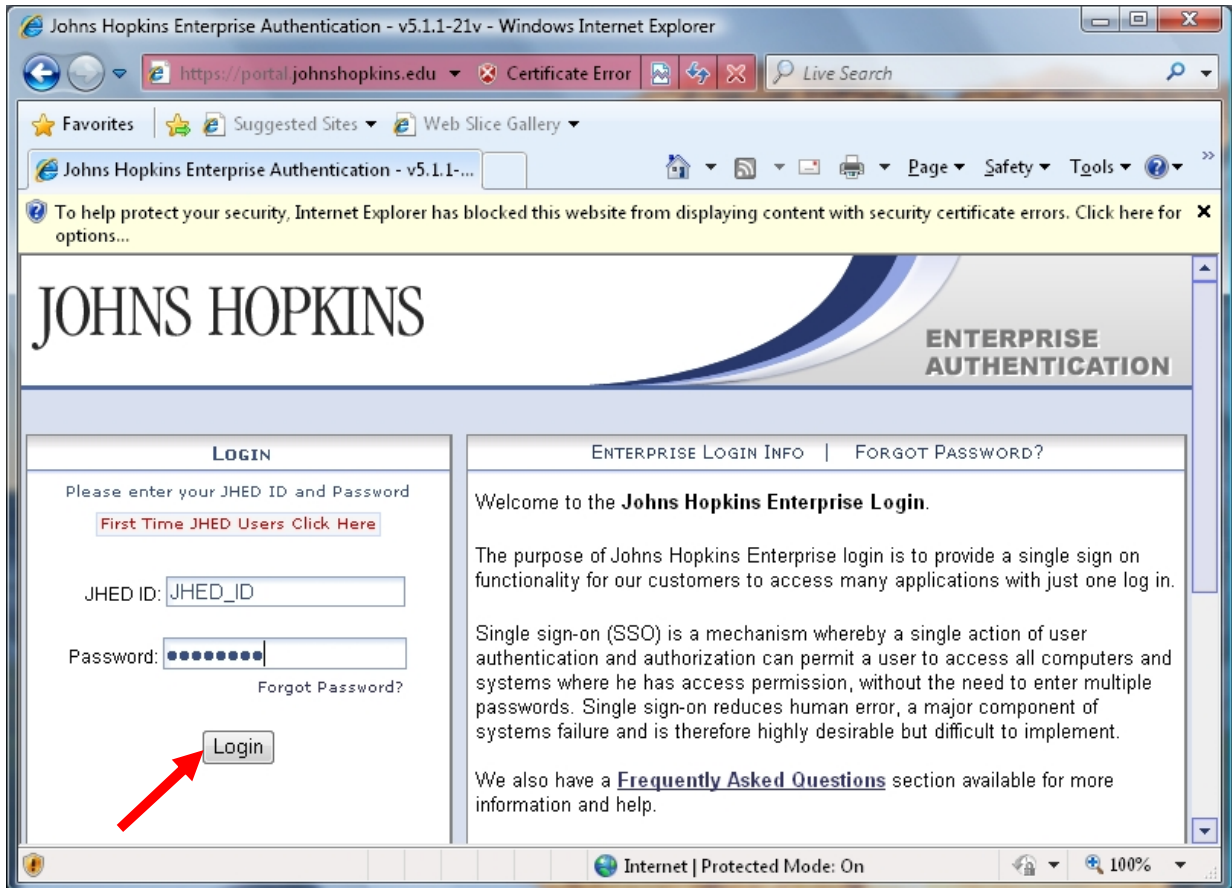
**Step 11:** You may be prompted by a certificate warning, depending on what version and type of web browser you are using. Please click **Continue to this website**.





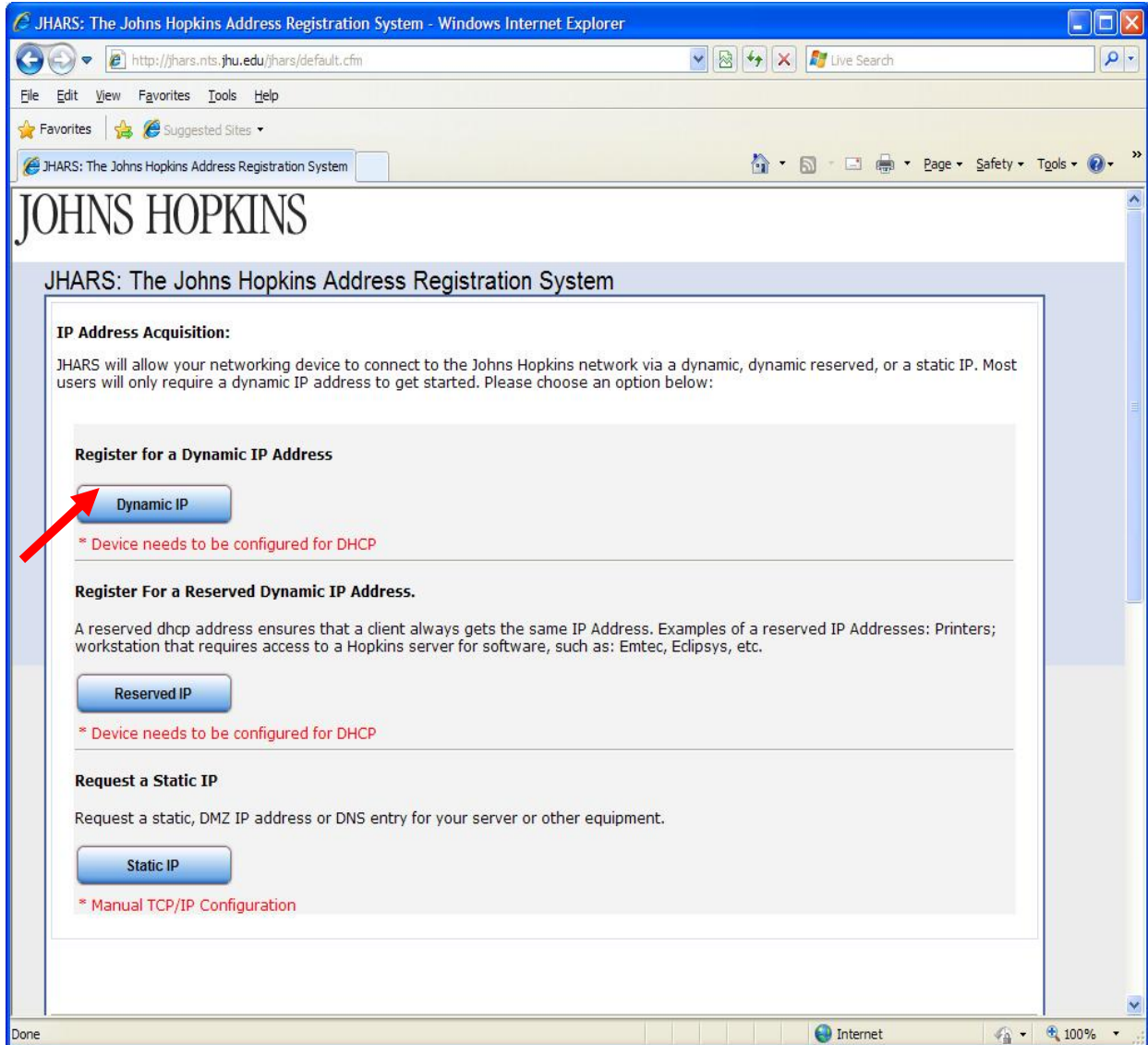
## Wireless @ Johns Hopkins

**Step 12:** Enter your JHED logon credentials and click **Login** to access the registration process.



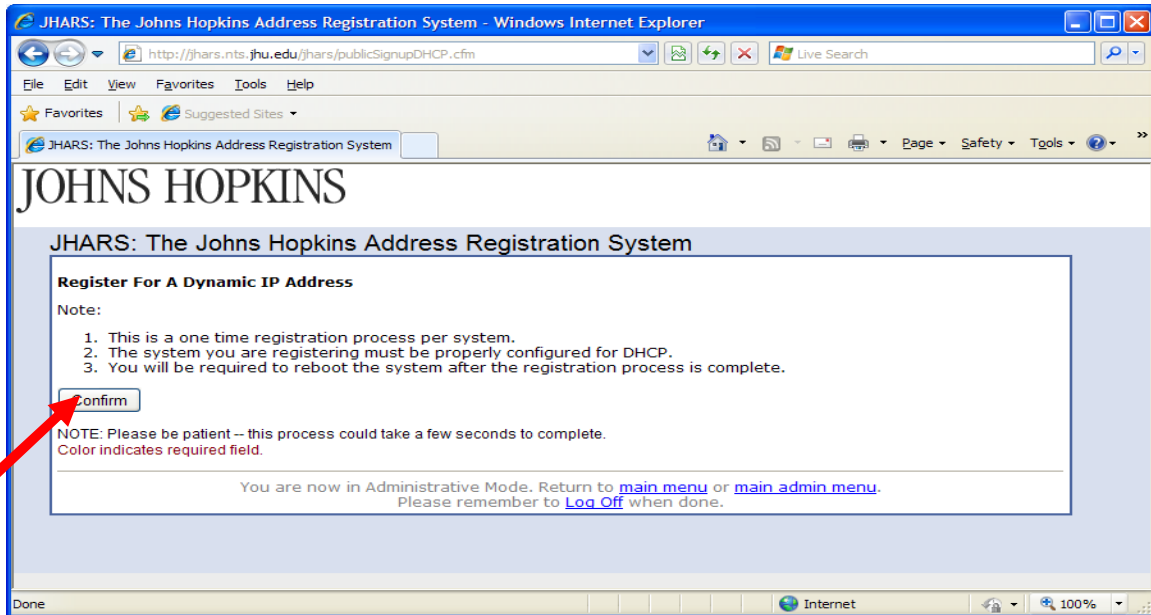
# Wireless @ Johns Hopkins

**Step 13:** Click on **DYNAMIC IP** to register.

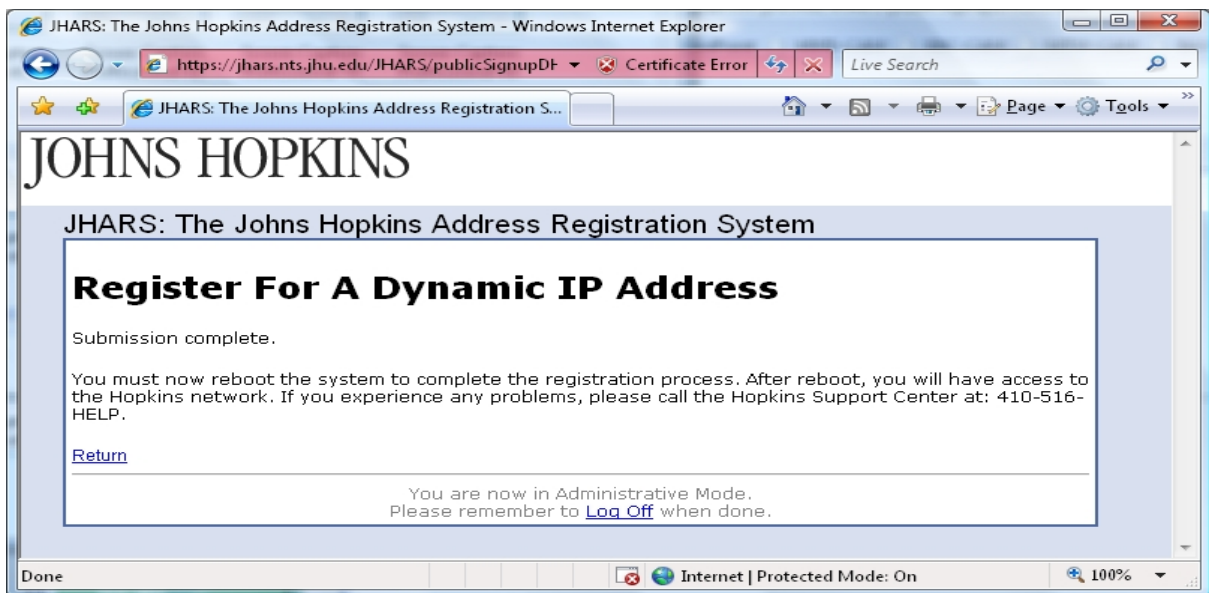


# Wireless @ Johns Hopkins

**Step 14:** Click **Confirm** to conclude and submit the request.



**Step 15:** Please **Reboot** to conclude the registration process.



## Wireless @ Johns Hopkins

### Where do I get additional help?

#### **Technical Assistance (walk-up)**

Garland Hall Basement

Monday - Friday 8:00 AM - 4:30PM

#### **Contact the Support Center at:**

(410)955-HELP [(410)955-4357] Johns Hopkins East Baltimore

(410)516-HELP [(410)516-4357] Johns Hopkins Homewood Campus

(443)997-HELP [(443)997-4357] Johns Hopkins Mount Washington